



CCD

MEDICAL DEVICES

**CATALOGUE
MEDICAL DEVICES**



Working in close collaboration with healthcare professionals and always striving to meet patients needs, **Laboratoire CCD** is happy to present its new catalogue to you.

Laboratoire CCD is a key leader in the areas of **Assisted Reproductive Technology, gynaecology and obstetrics**, developing a wide range of medical devices, pharmaceuticals and dietary supplements promoting innovation in women's health.

More than fifty years of experience in the development and manufacturing of medical devices have earned us the recognition of gynaecology and human reproduction specialists in France and throughout the world.

Laboratoire CCD is reaffirming its ongoing commitment to offer you better products and services:

Most of our products are **manufactured in France**, at our plant in Neuilly-en-Thelle (Oise, FRANCE). Our R&D team develops Frenchmade products with the required expertise in **all aspects of manufacturing and good practices**.

This know-how has allowed us to keep expanding our product development into ever more technical and demanding areas, using materials of the highest medical quality.

Our mission is to offer to our customers the best in terms of quality, performance, reliability and value. Whether for our latest developments or for devices that have become international references, it is our constant desire to support changes in protocols developed by the best teams of clinicians and propose to them the best tools.

Our daily mission: to provide care to women and accompany them through each phase of their lives.

For more detailed information, please contact your local representative or:

International Sales Department

Tél. + 33 (0) 1 44 95 17 00
Fax + 33 (0) 1 44 95 14 90
customer-service@ccdlab.com

Laboratoire CCD

36, rue Brunel
75017 Paris - France
export@ccdlab.com
www.ccd-lab.com



Sterilization.....	4
French design and manufacturing.....	5
Certifications	6
CE marking and symbols, brands and size measurements	7
Index.....	47

ASSISTED REPRODUCTIVE TECHNOLOGY

Oocytes retrieval	10
Ovo® ART of CCD® needle	10
Classic Ovo® needle.....	10
OPS® ART of CCD® sets	11
OPS® Classic sets	12
OPS® vials	13
Embryo transfer	14
1 piece	
Inventcath Eco.....	14
Frydman® Classic	14
Frydman® Memory	15
Mock catheter	15
2 pieces	
Echogyn® Embryoview M.....	16
Frydman® Ultrasoft	17
Frydman® Ultrasoft Echo.....	17
Ultrasoft Frydman® Set Echo	18
Classic Ultrasoft	19
Pearl Tip Classic.....	20
Pearl Tip Soft.....	20
3 pieces	
Short Frydman® Set.....	21
Frydman® Soft with Guide.....	21
Ultrasoft Frydman® Set with Guide	22
Ultrasoft Frydman® Set Echo with Guide	22
TDT® set	23
Full Echo® 23	24
Full Echo® Pro	25
Intrauterine insemination	26
Intrauterine insemination catheters	26-27
IUI and embryo transfer accessories	28
IUI and embryo transfer syringe	28

FUNCTIONAL EXPLORATION OF THE FEMALE REPRODUCTIVE SYSTEM

Hysterosalpingography and Chromopertubation	32
Rigister®.....	32
Sliding Rigister®.....	33
Bloc Connector	33
Sonohysterography.....	34
Siscone®	34
Rudigoz catheter	35
Endometrial sampling.....	36
Pipelle®	36
Pipelle® Mark II	36
Pipelle H	37
Endobrush® standard.....	38
Cervical mucus aspiration.....	39
Spirette® and Mucat®	39
Functional exploration.....	40
Flexible hysterometer	40
Progressive dilator.....	41

OBSTETRICS

Needles for amniocentesis and cordocentesis	44
Needles for amniocentesis and cordocentesis	44
Chorionic villus sampling	46
CVS set.....	46
Blache needles	46
Accessory for chorionic villus sampling and amniocentesis/cordocentesis	47
ABC system.....	47

Sterilization



Radiation

Radiation sterilization is used for all devices destined for Assisted Reproductive Technology (ART). STERILE | R

Reproductive cells (sperm and eggs) or embryos are particularly sensitive to their environment, the Laboratoire CCD choses this technique to ensure that the sterilisation of the devices will have no impact on the survival and development of the cells.

Radiation sterilization consists in exposing the products to radiation. This technique ensures the complete absence of residual cytotoxic compounds, but may cause problems related to the degradation of certain materials.

For this reason, it cannot be used for all devices.

Ethylene oxide

Ethylene oxide (EO) is used for devices in contact with adult patients. STERILE | EO

Products sterilised by EO must undergo through an aeration cycle to eliminate gas residues. The quantity of residue is precisely controlled and must comply with international standards for acceptable dose limit.

French design and manufacturing

The products sold by the Laboratoire CCD are manufactured mainly in France.



R&D teams are constantly developing innovative products to meet user needs.



The products are regularly inspected during the manufacturing process. For some products, inspection is carried out on 100% of them.



The plant manages all production techniques: extrusion, moulding and overmoulding.

Certifications

■ Certificates of conformity with requirements of international standards



Article 120 on transitional provisions of Regulation MDR 2017/745 has been amended by the publication on 20 March 2023 of amending Regulation 2023/607 in order to:

- Restore and/or extend the validity of certain certificates issued under the Directive 90/385/CEE and Directive 93/42/EEC, and
- Subsequently allow the corresponding devices to continue to be placed on the market after their certificates expire, provided that they comply with the requirements of the new Regulation 2023/607.

As a manufacturer of medical devices with certificates issued under Directive 93/42, Laboratoire CCD complies with all the requirements set forth by this new regulation, thereby benefiting from an extension of these certificates, which are now valid until December 31, 2028. All documents confirming the eligibility of this extension are available upon request at the following email address: export@ccdlab.com

■ CE certifications



These certificates are available on request by email to contact@ccd-lab.com

CE marking and symbols

Used on packaging

	CE-marked device		Date of manufacture
	Single use - Do not reuse		Expiry date
	Read leaflet before use	REF	Device reference
	Device sterilised by radiation	LOT	Batch code
	Device sterilised with ethylene oxide		Protect from moisture
	Non-sterile		Keep away from light and the sun
	Manufacturer		Do not use if the wrapping or primary packaging is damaged
	Warning: Read the instructions carefully before use		Single sterile barrier system with protective packaging outside
	Do not re-sterilize/ No	MD	Medical Device
	Single sterile barrier system	MEA	Mouse Embryo Assay
		HSSA	Human Sperm Survival Assay

Brands

The following brand names are registered and are the property of the Laboratoire CCD:

Full Echo	Endobrush	Endocyte	Frydman
OPS	HOC**	Pearl Tip	Mucat
Spirette	Rigister**	Scrinet**	Siscone
A.R.T. OF C.C.D.	T.D.T	Echogyn*	Pipelle

Size measurements

French gauge system

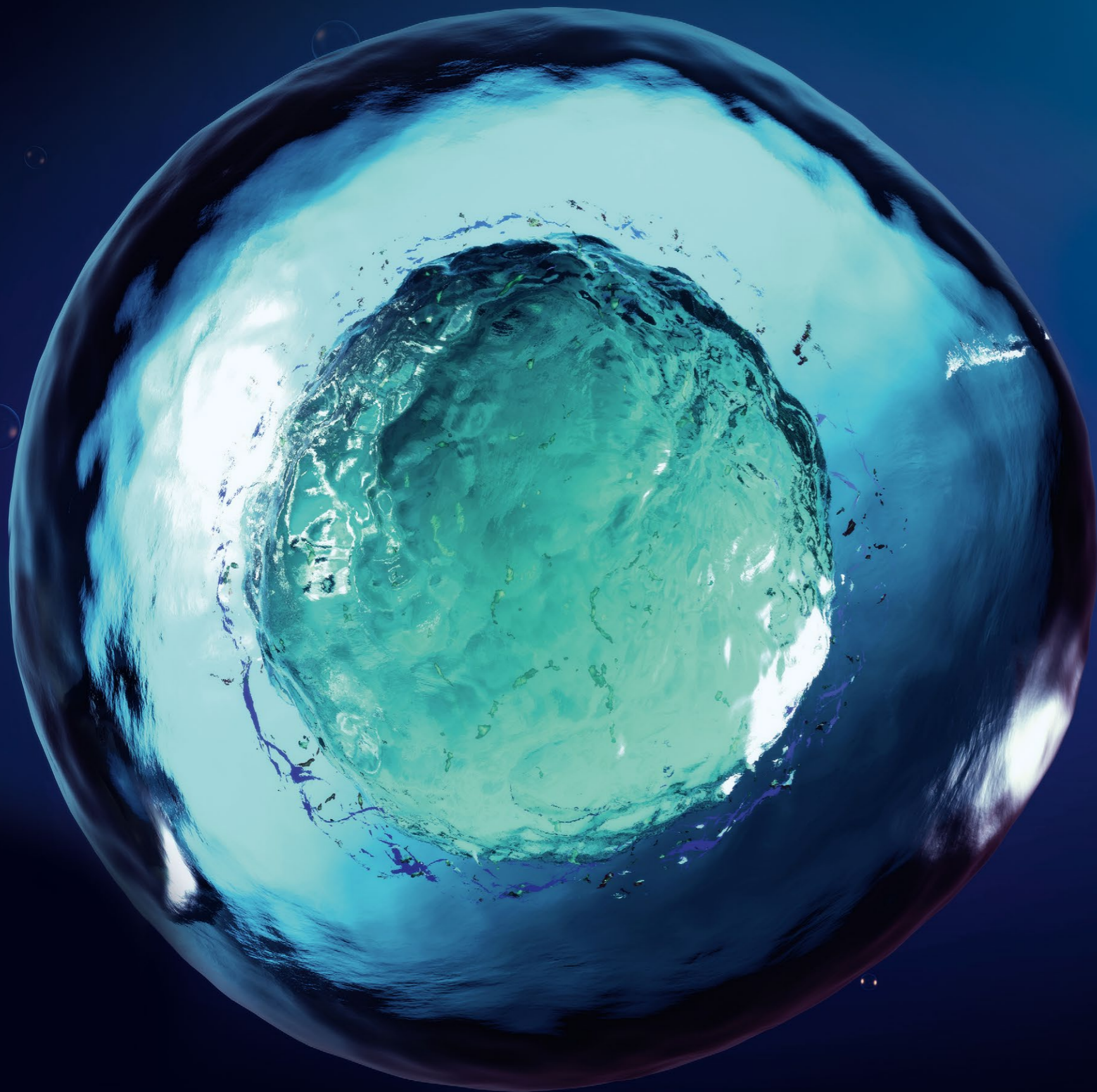
The gauge of instruments used was defined for the first time in 1849 by Charrière, a French manufacturer of surgical instruments. Used in the United States, the Charrière scale became the "French" system (F or Fr).

- Charrière (Ch) or French (F/Fr) scale: 1 Ch = 1 F = 1/3 mm

Gauge

For needles, the diameter is often expressed in Gauge. The diameter in gauge corresponds to the maximum number of needles or catheters that can be introduced in a standard tube: 22 needles of size 22 gauge can be placed in the standard.

* PATRICK CHOAY S.A (PCSA) property
** PRODIMED property



ART

Assisted Reproductive Technology

For more than fifty years, Laboratoire CCD has been working in partnership with doctors and biologists to help couples who wish to have children.

From insemination catheters to embryo transfer catheters, and follicular puncture sets, Laboratoire CCD does its best to offer high-quality and innovative products in line with technical advancements and best practices.

Ovo ART of CCD® and Classic needle STERILE R

Needles with advanced technology for egg retrieval

Ovo ART of CCD needle

- **Composition:**
 - Single-lumen, triple bevel needle, highly echogenic with engravings.
 - Luer-Lock tip.
- **Benefits:**
 - High-quality steel facilitating handling and sliding.
 - Triple-bevel to easily penetrate tissue.
 - Very high echogenicity for better visualization and control.

Classic needle

- **Composition:**
 - Single-lumen, double-bevel needle, echogenic due to sandblasting.
 - Luer-Lock tip



Two needle versions

Classic version	ART of CCD® version
<ul style="list-style-type: none"> + High echogenicity ✓ sandblasted tip + High penetration quality ✓ double-bevel needle + Large internal lumen ✓ thin walls 	<ul style="list-style-type: none"> + Very high echogenicity ✓ five circular echogenic engravings + Excellent penetration quality ✓ triple-bevel needle + Increased rigidity and large internal lumen ✓ thin, rigid walls + Flexibility ✓ more flexible needle

Product Name	Order Reference	Internal Reference	Length	Echogenicity	Needle Int. Ø	Needle Ext. Ø	Packaging
Ovo Classic Needle 30 cm G17	1403001	7002691	30 cm	Sandblasting	1,2 mm	1,5 mm 17 G	10/box
Ovo needle ART of CCD	1313701	7002645	32 cm	Engraving	1.0 mm	1.4 mm 17G	10/box

Class IIa medical device. Manufacturer: Laboratoire CCD - CE0459. Read the instructions carefully before use. Use before the expiry date indicated on the wrapping. Do not use if the primary packaging is damaged or open prior to the medical procedure.

OPS® ART of CCD® sets STERILE R

Pre-connected sets for follicular puncture

- **Composition:**
 - ART of CCD high-quality needle. Single-lumen, triple bevel and echogenic with engravings.
 - Kink-resistant polyurethane tubes.
 - Caps ensuring that vials are leakproof during collection.
- **Benefits:**
 - The ART of CCD sets limit the risk of fracturing the zona pellucidan (follicular puncture using pump for better control of aspiration).
 - ART needles for enhanced ultrasound monitoring and easier insertion into tissue.
- **Versions:**
 - OPS
 - With or without tap (the 3-way tap designed for rinsing and flushing the needle).



3-way tap

30 cm needle, 17G (1.5 mm)

- + Very high echogenicity
- ✓ five circular echogenic engravings
- + Excellent penetration quality
- ✓ triple-bevel needle
- + Increased rigidity and large internal lumen
- ✓ thin, rigid walls
- + Flexibility
- ✓ more flexible needle

Echogenic from engravings

Silicone taper for OPS

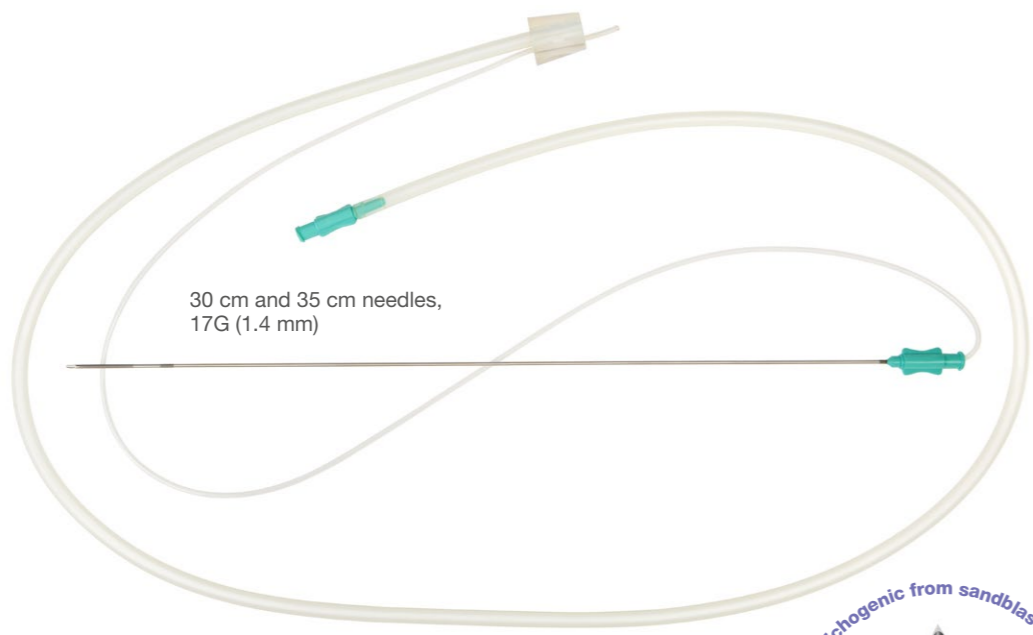
Product Name	Order Reference	Internal Reference	Tap	Needle			Aspiration tubing			Cap		Packaging
				Type	Length	Diam.	Length	Ø Int.	Ø Ext.	Type	Compatibility	
OPS ART of CCD	1313101	7002639	No	ART (engraving tip)	30 cm	Ø Ext. 1,4 mm (17 G) Ø Int. 1 mm	107 cm	1.1 mm	2 mm	Silicone cone	15 ml Falcon type vial	10/box
	1313201	7002640	Yes				50 cm					

Class IIa medical devices. Manufacturer: Laboratoire CCD - CE0459. Read the instructions carefully before use. Use before the expiry date indicated on the wrapping. Do not use if the primary packaging is damaged or open prior to the medical procedure.

OPS® Classic sets STERILE R

Premium pre-connected sets for follicular puncture

- **Composition:**
 - Classic needle. Single-lumen, double-bevel and echogenic due to sandblasting.
 - Kink-resistant polyurethane tubes.
 - Caps ensuring vials are leakproof during collection.
- **Benefits:**
 - The Classic sets limit the risk of fracturing the zona pellucida (follicular puncture using pump for better control of aspiration).
- **Versions:**
 - OPS
 - With or without tap (the 3-way tap designed for rinsing and flushing the needle).



- + **High echogenicity**
 - ✓ sandblasted tip
- + **High penetration quality**
 - ✓ double-bevel needle
- + **Large internal lumen**
 - ✓ thin walls



Product Name	Order Reference	Internal Reference	Tap	Needle			Aspiration tubing			Cap		Packaging
				Type	Length	Diam.	Length	∅ Int.	∅ Ext.	Type	Compatibility	
OPS Classic	1301001	7005722	Yes	∅ Ext. 1.5 mm ∅ Int. 1.2 mm	30 cm	17 G	50 cm	1.1 mm	2 mm	Silicone cone	15 ml Falcon type vial	10/box
	7005723	7005723	No		107 cm							
	7005413	7005413	Yes	35 cm	17 G	50 cm						
	7005414	7005414	No			107 cm	5/box					

Class IIa medical device. Manufacturer: Laboratoire CCD - CE0459. Read the instructions carefully before use. Use before the expiry date indicated on the wrapping. Do not use if the primary packaging is damaged or open prior to the medical procedure.

OPS® vials STERILE R

Vials for follicular puncture sets

- **Description:**
 - Transparent vials with screw cap for collection and transport of eggs.
 - Compatible with OPS sets.
 - Designed for placement in incubators.
- **Types:**
 - 15 ml OPS vial, Falcon-type with conical bottom.



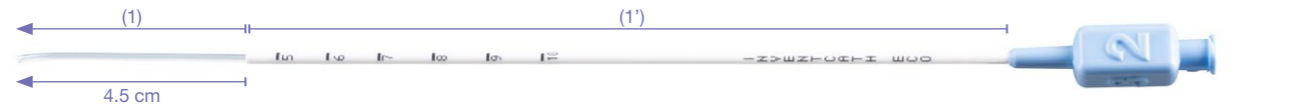
Product Name	Order Reference	Internal Reference	Volume	Diameter	Length	Packaging
OPS vial	1313000	7002761	15 ml	17 mm	12 cm	100/box

OPS vial: Manufacturer: SARSTEDT In-vitro Product., Spirette, Mucat: Class IIa medical devices. Manufacturer: Laboratoire CCD - CE0459. Use before the expiry date indicated on the wrapping. Do not use if the primary packaging is damaged or open prior to the medical procedure.

Catheter 1 piece

Inventcath Eco STERILE R

- Catheter with pre-curved end, to facilitate passage through cervixes with difficult access.
- Proximal tip markings for better positioning and locating of the distal curve.



Product Name	Order Reference	Internal Reference	Type	Length*	Ø Ext 1	Ø Int 1	Ø Ext. 1'	Ø Int. 1'	Echogenic	Packaging
Inventcath Eco	1320121	7002647	Curved	22.4 cm/18.5 cm	1.6 mm	1.05 mm	2.2 mm	1.7 mm	No	20/box

*Total length/Working length

Frydman® Classic STERILE R

The pioneer catheter from CCD for embryo transfer, with flexible tip.



Product Name	Order Reference	Internal Reference	Type	Length*	Ø Ext 1	Ø Int 1	Ø Ext. 1'	Ø Int. 1'	Echogenic	Packaging
Frydman Classic 4.5	1306045	7002630	Straight	20.7 cm/18 cm	1.6 mm	1.15 mm	2.6 mm	1.7 mm	No	20/box
Frydman Classic 5.5	1306055	7002631	Straight	21.7 mm/19 cm	1.6 mm	1.15 mm	2.6 mm	1.7 mm	No	20/box

*Total length/Working length

Class I sterile medical devices. Manufacturer: Laboratoire CCD - CE0459. Read the instructions carefully before use. Use before the expiry date indicated on the wrapping. Do not use if the primary packaging is damaged or open prior to the medical procedure.

Catheter 1 piece

Mock Catheter STERILE R

- Trial catheter with a flexible distal closed-end in polyethylene.

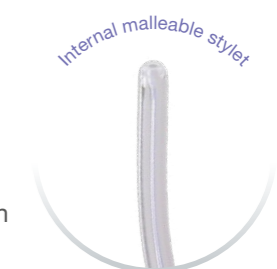
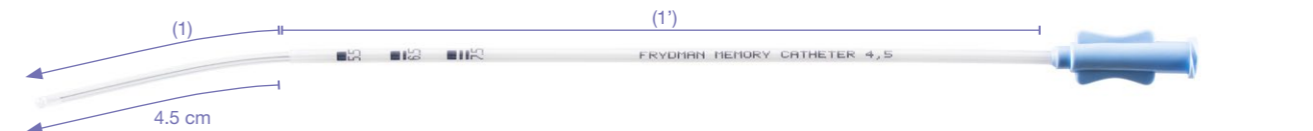


Product Name	Order Reference	Internal Reference	Total Length	Working length	Ø Ext. 1	Ø Int. 1	Ø Ext. 1'	Ø Int. 1'	Echogenic	Packaging
Mock catheter	1322901	7002653	20.7 cm	18 cm	1.7 mm	1.15 mm	2.60 mm	1.6 mm	No	25/box

Frydman® Memory STERILE R

Malleable catheter

- 1-piece catheter to transfer embryos with minimal handling
- The malleable catheter can be curved to adapt its shape according to the cervical profile, for insertion into very narrow or complex cervixes.



Product Name	Order Reference	Internal Reference	Type	Length*	Ø Ext 1	Ø Int 1	Ø Ext. 1'	Ø Int. 1'	Echogenic	Packaging
Frydman Memory	130MF45	7002735	Malleable	20.7 cm/18 cm	2.1 mm	1.1 mm	2.6 mm	2.2 mm	No	10/box

*Total length/Working length

Class I sterile medical devices. Manufacturer: Laboratoire CCD - CE0459. Read the instructions carefully before use. Use before the expiry date indicated on the wrapping. Do not use if the primary packaging is damaged or open prior to the medical procedure.

Catheter 2 pieces

Echogyn® Embryoview M STERILE R

2-pieces set for embryo transfer with echogenic insert

- Supported, flexible catheter with echogenic insert at its end to optimize ultrasound monitoring.
- FEP (Fluoroethylene propylene) insertion sheath for improved sliding.



Product Name	Order Reference	Internal Reference	Insertion sheath			Catheter			Echogenic	Packaging
			Length*	Ø Ext.	Ø Int.	Length*	Ø Ext.	Ø Int.		
Echogyn Embryoview M 18 cm	1325901	7002675	16.5 cm/13 cm	2.29 mm	1.90 mm	24.4 cm/20.8 cm	1.57 mm	0.55 mm	Yes	10/box
Echogyn Embryoview M 23 cm	1325701	7002673	21.5 cm/18 cm	2.29 mm	1.90 mm	29.4 cm/25.8 cm	1.57 mm	0.55 mm	Yes	10/box

*Total length/Working length

Trial transfer catheters are available separately.

Trial transfer catheters present similar features to the real transfer catheters, the difference rests on the closed end and the green base.

Product Name	Order Reference	Internal Reference	Insertion sheath			Catheter			Echogenic	Packaging
			Length*	Ø Ext.	Ø Int.	Length*	Ø Ext.	Ø Int.		
Echogyn Embryoview M Mock 18 cm	1326001	7002676	16.5 cm/13 cm	2.29 mm	1.90 mm	24.4 cm/20.8 cm	1.57 mm	0.55 mm	Yes	10/box
Echogyn Embryoview M Mock 23 cm	1325801	7002674	21.5 cm/18 cm	2.29 mm	1.90 mm	29.4 cm/25.8 cm	1.57 mm	0.55 mm	Yes	10/box

*Total length/Working length

Class I sterile medical devices. Manufacturer: Laboratoire CCD - CE0459. Read the instructions carefully before use. Use before the expiry date indicated on the wrapping. Do not use if the primary packaging is damaged or open prior to the medical procedure.

Reference available only for US

Catheter 2 pieces

Frydman® Ultrasoft STERILE R

2-pieces set for embryo transfer with ultra-flexible catheter

- Ultra-flexible catheter
- Catheter supported on its proximal end to facilitate handling.
- Stylet available separately to increase rigidity, curve and protect the insertion sheath during passage into the cervix.



Product Name	Order Reference	Internal Reference	Insertion sheath			Catheter			Echogenic	Packaging
			Length*	Ø Ext.	Ø Int.	Length*	Ø Ext.	Ø Int.		
Frydman Ultrasoft	1324201	7002665	18 cm/14.5 cm	2.2 mm	1.85 mm	25.5 cm/21.9 cm	1.55 mm	0.7 mm	No	10/box
Stylet for Frydman Soft Ultrasoft	1320701	7002648	20.1 cm/17.8 cm	1.6 mm	N/A	N/A	N/A	N/A	N/A	10/box

*Total length/Working length

Frydman® Ultrasoft Echo STERILE R

2-pieces set for embryo transfer with ultra-flexible catheter and echogenic ring

- Ultra-flexible catheter with echogenic ring at the tip to optimize ultrasound monitoring.
- Catheter supported on its proximal end to facilitate handling.
- Stylet available separately to increase rigidity, curve and protect the insertion sheath during passage into the cervix.

Echogenic ring at tip



Product Name	Order Reference	Internal Reference	Insertion sheath			Catheter			Echogenic	Packaging
			Length*	Ø Ext.	Ø Int.	Length*	Ø Ext.	Ø Int.		
Frydman Ultrasoft Echo	1324301	7002666	18 cm/14.5 cm	2.2 mm	1.85 mm	25.5 cm/21.9 cm	1.55 mm	0.7 mm	Yes	10/box
Stylet for Frydman Ultrasoft Echo	1320701	7002648	20.1 cm/17.8 cm	1.6 mm	N/A	N/A	N/A	N/A	N/A	10/box

*Total length/Working length

Class I sterile medical devices. Manufacturer: Laboratoire CCD - CE0459. Read the instructions carefully before use. Use before the expiry date indicated on the wrapping. Do not use if the primary packaging is damaged or open prior to the medical procedure.

Frydman Ultrasoft echo exist aslo in 3 pieces «Ultrasoft Frydman Set Echo With Guide. Product information in the next part 3 pieces catheters».

Catheter 2 pieces

Ultrasoft Frydman® Set Echo STERILE R



Product Name	Order Reference	Internal Reference	Insertion sheath			Catheter			Echogenic	Packaging
			Length*	Ø Ext.	Ø Int.	Length*	Ø Ext.	Ø Int.		
Ultrasoft Frydman Set Echo	1323501	7002658	18 cm / 14.5 cm	2.2 mm	1.85mm	26 cm / 22.4 cm	1.55 mm	0.7 mm	Yes	10/box

*Total length/Working length

Trial transfer catheters are available separately.

Trial transfer catheter presents similar features to the embryo transfer catheter, the variance is based on the closed-end and the green coloured hand grip.

Product Name	Order Reference	Internal Reference	Insertion sheath			Catheter			Echogenic	Packaging
			Length*	Ø Ext.	Ø Int.	Length*	Ø Ext.	Ø Int.		
Ultrasoft Frydman Set Mock Echo	1323801	7002661	18 cm / 14.5 cm	2.2 mm	1.85 mm	26 cm / 22.4 cm	1.55 mm	0.7 mm	Yes	10/box

*Total length/Working length

Class I sterile medical devices. Manufacturer: Laboratoire CCD - CE0459. Read the instructions carefully before use. Use before the expiry date indicated on the wrapping. Do not use if the primary packaging is damaged or open prior to the medical procedure.

Reference available only for US

Catheter 2 pieces

Classic Ultrasoft STERILE R



2-pieces set for embryo transfer

- Transfer catheters in ultrasoft polyurethane on the whole length.
- FEP (fluoroethylene propylene) insertion sheath for improved sliding.



Product Name	Order Reference	Internal Reference	Insertion sheath			Catheter			Echogenic	Packaging
			Length*	Ø Ext.	Ø Int.	Length*	Ø Ext.	Ø Int.		
Classic Ultrasoft 18 cm	1321301	7002650	16.5 cm / 13 cm	2.29 mm	1.90 mm	24.4 cm / 20.8 cm	1.55 mm	0.7 mm	No	10/box
Classic Ultrasoft 23 cm	1324501	7002667	21.5 cm / 18 cm	2.29 mm	1.90 mm	29.4 cm / 25.8 cm	1.55 mm	0.7 mm	No	10/box

*Total length/Working length

Trial transfer catheters are available separately.

Trial transfer catheter presents similar features to the embryo transfer catheter, the variance is based on the closed-end and the green coloured hand grip.



Product Name	Order Reference	Internal Reference	Insertion sheath			Catheter			Echogenic	Packaging
			Length*	Ø Ext.	Ø Int.	Length*	Ø Ext.	Ø Int.		
Classic Ultrasoft Mock 18 cm	1323001	7002654	16.5 cm / 13 cm	2.29 mm	1.90 mm	24.4 cm / 20.8 cm	1.55 mm	0.7 mm	No	10/box
Classic Ultrasoft Mock 23 cm	1324601	7002668	21.5 cm / 18 cm	2.29 mm	1.90 mm	29.4 cm / 25.8 cm	1.55 mm	0.7 mm	No	10/box

*Total length/Working length

Class I sterile medical devices. Manufacturer: Laboratoire CCD - CE0459. Read the instructions carefully before use. Use before the expiry date indicated on the wrapping. Do not use if the primary packaging is damaged or open prior to the medical procedure.

Reference available only for US

Catheter 2 pieces

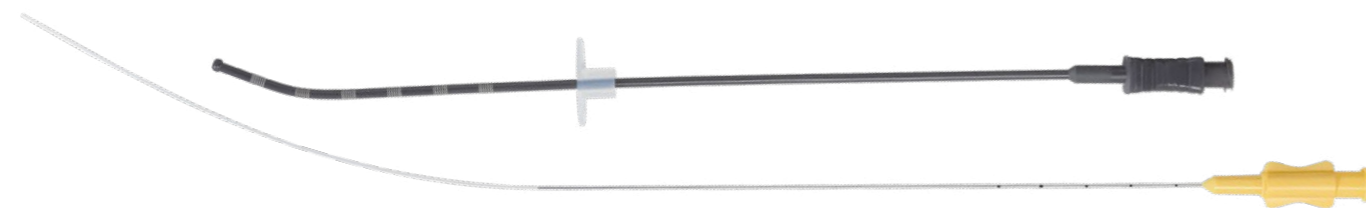
Pearl Tip Classic and Soft STERILE R

2-piece sets for embryo transfer with pre-curved insertion sheath with distal spherical tip for simplified use

- Flexible, thin and soft catheter, supported on its proximal part.
- Insertion sheath with distal spherical tip, sliding stopper and an arrow on the hand grip indicating the direction of the distal curve of the insertion sheath. The Pearl Tip insertion sheath is atraumatic and facilitates passage through all cervical profiles.



Pearl Tip Classic



Pearl Tip Soft



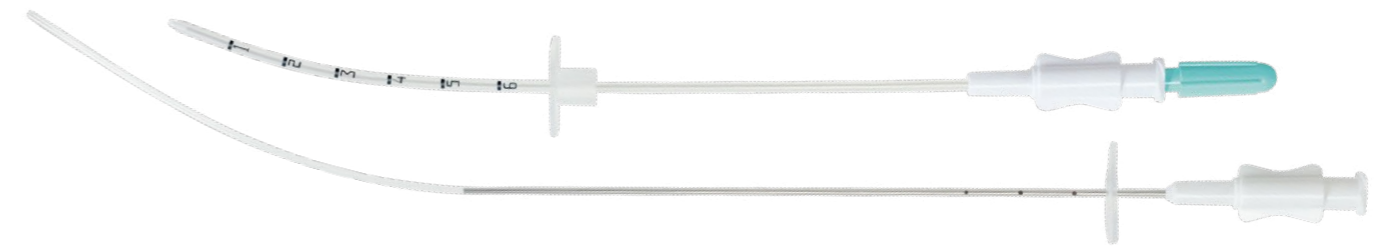
Product Name	Order Reference	Internal Reference	Insertion sheath			Catheter			Echogenic	Packaging
			Length*	Ø Ext.	Ø Int.	Length*	Ø Ext.	Ø Int.		
Pearl tip Classic	1323951	7002663	21.9 cm/ 18.3 cm	2.2 mm	1.10 mm	29.8 cm/ 26.3 cm	1 mm	0.6 mm	No	10/box
Pearl Tip Soft	1323961	7002664	21.9 cm/ 18.3 cm	2.2 mm	1.10 mm	29.8 cm/ 26.3 cm	1 mm	0.6 mm	No	10/box

*Total length/Working length

Class I sterile medical devices. Manufacturer: Laboratoire CCD - CE0459. Read the instructions carefully before use. Use before the expiry date indicated on the wrapping. Do not use if the primary packaging is damaged or open prior to the medical procedure.

Catheter 3 pieces

Short Frydman Set STERILE R



Product Name	Order Reference	Internal Reference	Insertion sheath		Catheter		Mandrel		Echogenic	Packaging
			Length*	Ø	Length*	Ø	Length*	Ø		
Short Frydman Set	1307000US	7002733	18 cm/ 14.5 cm	Ext.: 2.2 mm Int.: 1.85 mm	25.2 cm/ 21.8 cm	Ext.: 1.6 mm Int.: 1.15 mm	19.8 cm/ 17.8 cm	Ext. Tube: 1.6 mm Ext. metal guide: 0.5 mm	No	10/box

*Total length/Working length

Frydman® Soft with Guide STERILE R

Set with insertion sheath, stylet and flexible catheter

- Flexible catheter, supported at its proximal end to facilitate handling, offered with an insertion sheath equipped with an integrated stylet.
- Introduction sheath to facilitate passage through all cervical profiles.
- Malleable stylet to curve the introduction sheath.



Product Name	Order Reference	Internal Reference	Insertion sheath		Catheter		Mandrel		Echogenic	Packaging
			Length*	Ø	Length*	Ø	Length*	Ø		
Frydman Soft with Guide	1307000	7002632	18 cm/ 14.5 cm	Ext.: 2.2 mm Int.: 1.85 mm	26 cm/ 22.4 cm	Ext.: 1.6 mm Int.: 1.15 mm	20.1 cm/ 17.8 cm	Ext. Tube: 1.6 mm Ext. metal guide: 0.5 mm	No	10/box

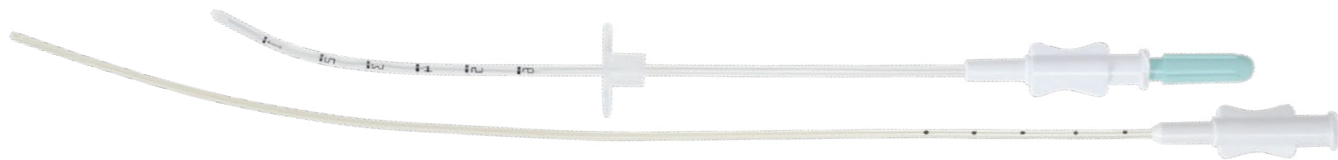
*Total length/Working length

Reference available only for US

Catheter 3 pieces

Ultrasoft Frydman® Set with Guide

STERILE R

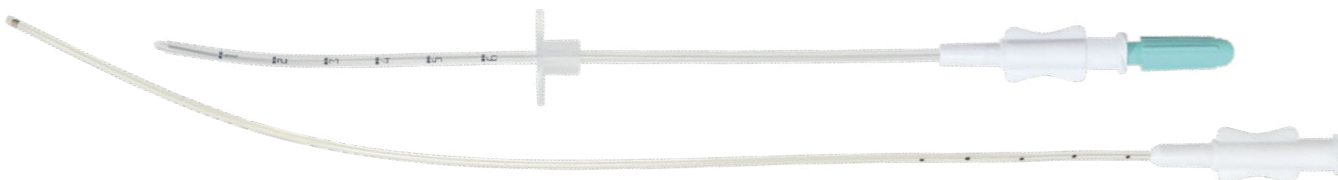


Product Name	Order Reference	Internal Reference	Insertion sheath		Catheter		Mandrel		Echogenic	Packaging
			Length*	Ø	Length*	Ø	Length*	Ø		
Ultrasoft Frydman® Set with Guide	131230301	7002719	18 cm / 14.5 cm	Ext.: 2.2 mm Int.: 1.85 mm	26 cm / 22.4 cm	Ext.: 1.55 mm Int.: 0.7 mm	20.1 cm / 17.8 cm	Ext. Tube: 1.6 mm Ext. metal guide: 0.5 mm	No	10/box

*Total length/Working length

Ultrasoft Frydman® Set Echo with Guide

STERILE R



Product Name	Order Reference	Internal Reference	Insertion sheath		Catheter		Mandrel		Echogenic	Packaging
			Length*	Ø	Length*	Ø	Length*	Ø		
Ultrasoft Frydman® Set Echo with Guide	1322801	7002652	18 cm / 14.5 cm	Ext.: 2.2 mm Int.: 1.85 mm	26 cm / 22.4 cm	Ext.: 1.55 mm Int.: 0.7 mm	20.1 cm / 17.8 cm	Ext. Tube: 1.6 mm Ext. metal guide: 0.5 mm	Yes	10/box

*Total length/Working length

Class I sterile medical devices. Manufacturer: Laboratoire CCD - CE0459. Read the instructions carefully before use. Use before the expiry date indicated on the wrapping. Do not use if the primary packaging is damaged or open prior to the medical procedure.

Catheter 3 pieces

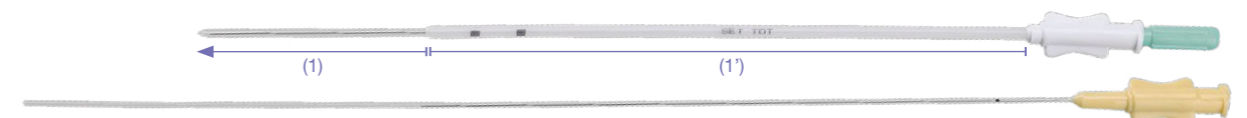
TDT® set

STERILE R



Ultra-thin transfer catheter

- An ultra-thin transfer catheter, supported on its proximal end to facilitate handling.
- An insertion sheath with flexible end and two insertion markers at 5.5 and 6.5 cm.
- A removable malleable metal stylet coated with polyethylene to shape the insertion sheath and facilitate passage through difficult cervixes.



Product Name	Order Reference	Internal Reference	Insertion sheath			Catheter		Mandrel		Echogenic	Packaging
			Length*	Ø1'	Ø1	Length*	Ø Ext.	Length*	Ø		
TDT Set	1308000	7002634	21.2 cm / 18.5 cm	Ext.1': 2.6 mm Int.1': 1.6 mm	Ext.: 1.7 mm Int.: 1.15 mm	26.4 cm / 22.8 cm	Ext.: 1 mm Int.: 0.6 mm	23.4 cm / 21 cm	Ext. Tube: 1 mm Ext. metal guide: 0.5 mm	No	10/box

*Total length/Working length

Class I sterile medical devices. Manufacturer: Laboratoire CCD - CE0459. Read the instructions carefully before use. Use before the expiry date indicated on the wrapping. Do not use if the primary packaging is damaged or open prior to the medical procedure.

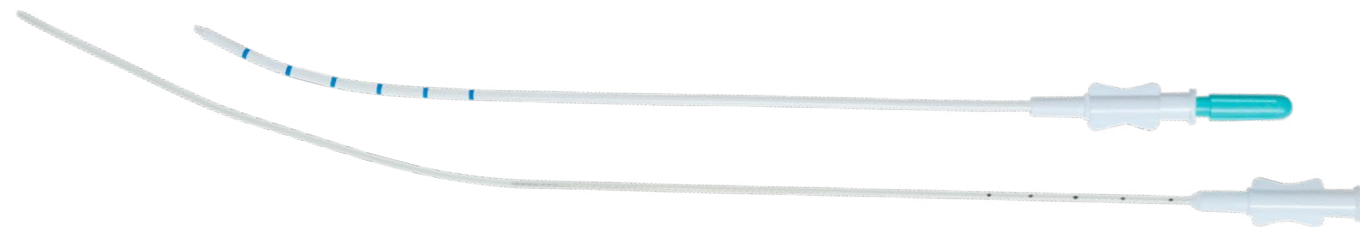
Catheter 3 pieces

Full Echo® 23 STERILE R 

1 PATENTED TECHNOLOGY

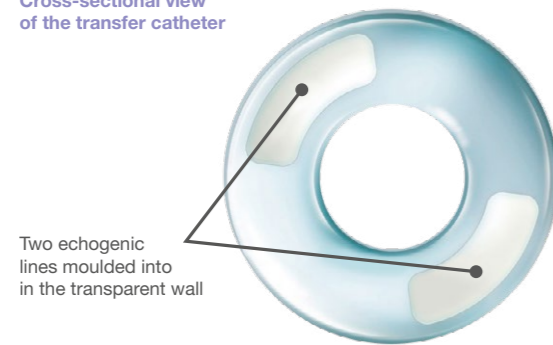
A genuine technological innovation - total echogenicity and transparency.
An echogenic and malleable embryo transfer set to maximize the control of the procedure.

- An ultrasoft transfer catheter, echogenic on its whole length to perfect ultrasound monitoring.
- The two echogenic lines are moulded into the wall of the catheter avoiding any direct contact with the embryos for maximum safety.
- A FEP (Fluoroethylene propylene) insertion sheath with 6 circular guide-marks, visible irrespective of the direction of the insertion sheath when in use.
- A removable malleable stylet coated with polyethylene to shape the outer sheath prior to its insertion to facilitate passage through difficult cervixes.



Echogenicity along the entire length to perfect ultrasound monitoring for maximum control

Cross-sectional view of the transfer catheter



Two echogenic lines moulded into in the transparent wall

PATENTED TECHNOLOGY

Flexible and echogenic catheter



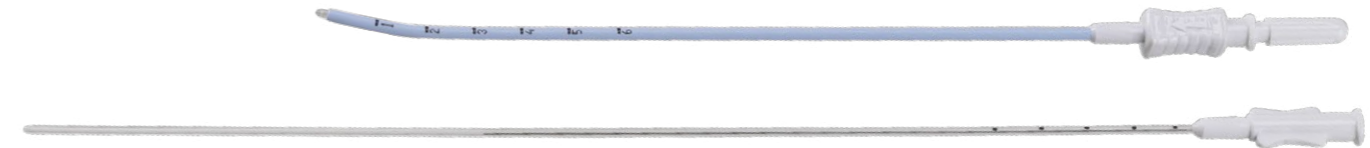
2 PATENTED TECHNOLOGIES

Catheter 3 pieces

Full Echo® Pro STERILE R 

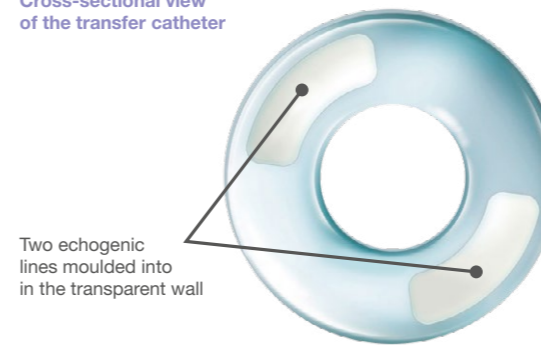
A double technological innovation - total echogenicity and transparency.
An echogenic and malleable embryo transfer set to maximize the control of the procedure.

- A transfer catheter, echogenic along its entire length to perfect ultrasound monitoring.
- The two echogenic lines are moulded into the wall of the catheter avoiding any direct contact with the embryos for maximum safety.
- A malleable insertion sheath to facilitate passage through the cervix.
- The obturating stylet protects the internal lumen of the insertion sheath from cervical mucus contamination during passage into the cervix and avoids a trial catheterization.



Echogenicity along the entire length to perfect ultrasound monitoring for maximum control

Cross-sectional view of the transfer catheter



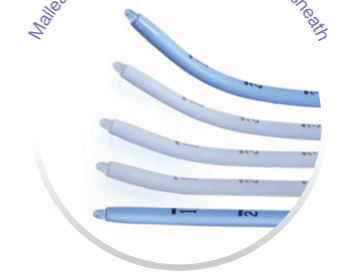
Two echogenic lines moulded into in the transparent wall

PATENTED TECHNOLOGY

Flexible and echogenic catheter



Malleable and pre-formable insertion sheath



PATENTED TECHNOLOGY

Product Name	Order Reference	Internal Reference	Insertion sheath		Catheter		Mandrel		Echogenic	Packaging
			Length*	Ø	Length*	Ø	Length*	Ø		
Full Echo 23 cm	1326501	7002681	21.5 cm/ 18 cm	Ext.: 2.29 mm Int.: 1.9 mm	29.5 cm/ 26 cm	Ext.: 1.55 mm Int.: 0.7 mm	23.8 cm/ 21.3 cm	Ext. Tube: 1.6 mm Ext. metal guide: 0.5 mm	Yes	10/box

*Total length/Working length

Class I sterile medical devices. Manufacturer: Laboratoire CCD - CE0459. Read the instructions carefully before use. Use before the expiry date indicated on the wrapping. Do not use if the primary packaging is damaged or open prior to the medical procedure.

Product Name	Order Reference	Internal Reference	Insertion sheath		Catheter		Mandrel		Echogenic	Packaging
			Type/ Length*	Ø	Length*	Ø	Length*	Ø		
Full Echo Pro	1326801	7002683	Malleable 19.3 cm/ 15.9 cm	Ext.: 2.7 mm Int.: 1.9 mm	27.4 cm/ 23.8 cm	Ext.: 1.55 mm Int.: 0.7 mm	21.6 cm/ 19.1 cm	Ext. Tube: 1.6 mm	Yes	10/box

*Total length/Working length

Class I sterile medical devices. Manufacturer: Laboratoire CCD - CE0459. Read the instructions carefully before use. Use before the expiry date indicated on the wrapping. Do not use if the primary packaging is damaged or open prior to the medical procedure.

Intrauterine insemination catheters STERILE R



Standard version

- ✓ Convenient for most inseminations
- ✓ Two lateral openings on the distal tip
- ✓ 17 cm in length and 4.5 cm flexible tip



Genitor

- ✓ Thin insemination catheter for narrow cervix
- ✓ Small diameter
- ✓ 17 cm in length and 4.5 cm flexible tip



Malleable Memory catheter

- ✓ Catheters with shape memory for cervixes with difficult access
- ✓ Adjusts to all cervix profiles
- ✓ 17 cm in length and 4.5 cm flexible tip



Standard version with stylet

- ✓ Convenient for most inseminations
- ✓ Two lateral openings on the distal tip
- ✓ 17 cm in length and 4.5 cm flexible tip
- ✓ Stylet to curve the catheter and facilitate passage through the cervix.



Class I sterile medical devices. Manufacturer: Laboratoire CCD - CE0459. Read the instructions carefully before use. Use before the expiry date indicated on the wrapping. Do not use if the primary packaging is damaged or open prior to the medical procedure.

A range of catheters adapted to different needs



Transport model IUI

- ✓ System for transporting the probe (movement/displacement from one location of the hospital to another)
- ✓ Cap for closing the lateral openings of the distal end
- ✓ Connector stopper to close the proximal end
- ✓ Protective sheath to prevent contamination
- ✓ Time limit for transport : 80 minutes



Intrauterine insemination catheters

Product Name	Order Reference	Internal Reference	Length	Length flexible tip	Int. volume	Ø Int.	Ø Ext.	Packaging
Standard IUI	120400S	7002726	17.5 cm	4.5 cm	0.40 mL	1.65 mm	2.10 mm	25/box
Genitor IUI	120400M	7002725	17.5 cm	4.5 cm	0.10 mL	0.70 mm	1.6 mm	25/box
Malleable memory IUI catheter with shape memory	12040MF	7002728	18 cm	4.5 cm	0.27 mL	1.10 mm	2.10 mm	25/box
Standard IUI catheter with stylet	12040AM	7002727	17.5 cm	4.5 cm	0.40 mL	1.65 mm	2.10 mm	25/box
Transport model IUI	120240301	7002717	17.5 cm	4.5 cm	0.40 mL	1.65 mm	2.10 mm	25/box

Class IIa medical device. Manufacturer: Laboratoire CCD - CE0459. Read the instructions carefully before use. Use before the expiry date indicated on the wrapping. Do not use if the primary packaging is damaged or open prior to the medical procedure.



Syringe for intrauterine insemination and embryo transfer

Three-pieces 1 ml syringe, with Luer slip tip.
Sterilisation by radiation suitable for ART procedures
It can be connected to intrauterine insemination catheters for the injection of fresh sperm or connected to embryo transfer catheters.



Product Name	Order Reference	Internal Reference	Volume	Packaging
IUI and embryo transfer syringe	1323101	7002655	1 ml	25/box

Class IIa medical device. Manufacturer: Laboratoire CCD - CE0459. Carefully read the instructions on the labelling.
Use before the expiry date indicated on the wrapping. Do not use if the wrapping or primary packaging is damaged.



Functional exploration of the female reproductive system

From our Rigister range for hysterosalpingography, our Pipelle range for endometrial biopsy, to the Siscone range for sonohysterography, Laboratoire CCD has long been regularly developing new devices in collaboration with doctors, to meet their needs and improve the quality of gynaecological exams.

Rigister® STERILE EO

Device providing optimal opacification of the uterus and fallopian tubes



- **Injection line with two-way tap:** for injection of the contrast medium or the methylene blue solution, while preventing any reflux via the cannula
- **Aspiration catheter with clamp:** to create the vacuum at the cup using a syringe or a vacuum system to be connected via bloc connector.

Cup ensuring seal on the cervix:
- four different cup sizes to correspond to all cervix shapes; provides sufficient and constant intracavitary pressure to opacity the fallopian tubes



Easy to use

- Aspiration to create the vacuum around the cup using syringe or a vacuum system to be connected via bloc connector. The clamp is used to avoid air backflow and maintain the vacuum throughout the procedure, to ensure proper gripping of the cervix.
- Injection of the contrast medium or the methylene blue solution with a luer-lock syringe.

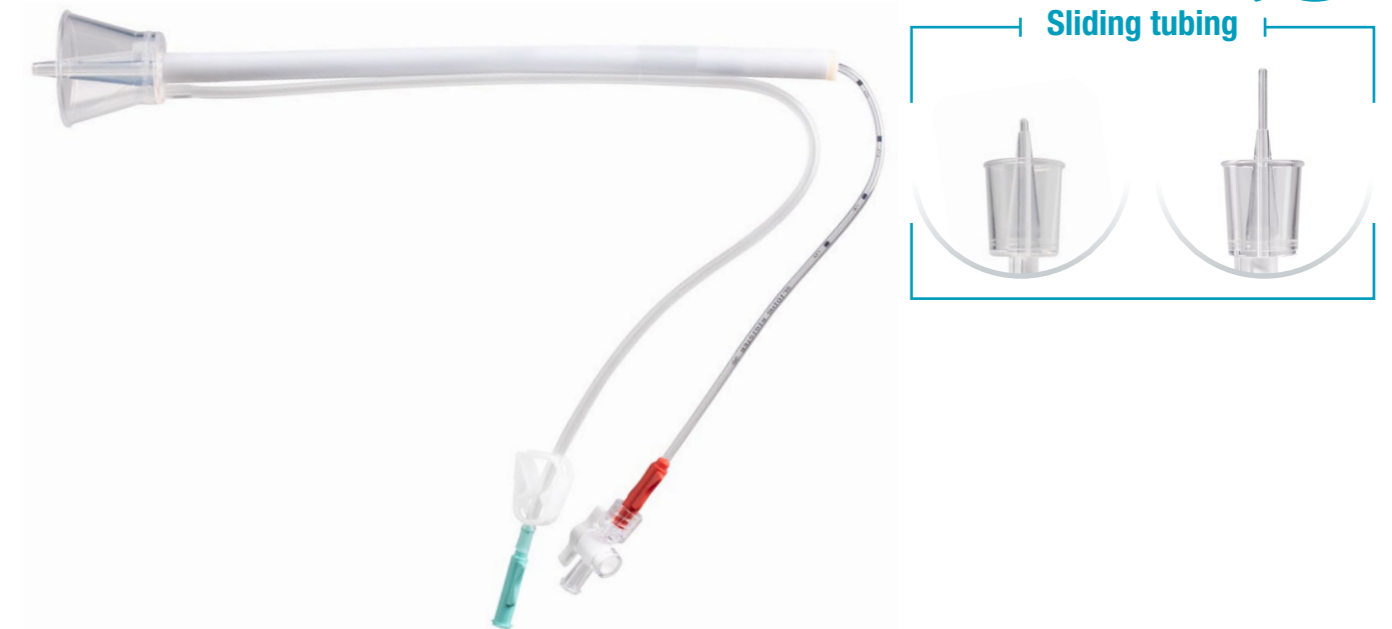
Product Name	Order References	Internal References	Ø Cup	Length injection line	Length aspiration line	Characteristics of the cannula	Packaging
Rigister	1401020	7002686	20 mm	480 mm	455 mm	Fixed	10/box
	1401025	7002687	25 mm	480 mm	465 mm	Fixed	10/box
	1401030	7002688	30 mm	480 mm	465 mm	Fixed	10/box
	1401035	7002689	35 mm	480 mm	465 mm	Fixed	10/box

Class I sterile medical devices. Manufacturer: Laboratoire CCD - CE0459. Read the instructions carefully before use. Use before the expiry date indicated on the wrapping. Do not use if the primary packaging is damaged or open prior to the medical procedure.

Sliding Rigister® STERILE EO

Device providing optimal opacification of the uterus and fallopian tubes with a sliding tube to facilitate its insertion into the cervix

- Aspiration line with clamp.
- Injection line with two-way tap.
- Cup providing seal at cervix: four different cup sizes.
- Sliding tubing to improve access and passage into the cervix. It has guide marks every 2 cm on the proximal section to indicate the length of the catheter inside the cervix.



Product Name	Order References	Internal References	Ø Cup	Length injection line	Length aspiration line	Characteristics of the cannula	Packaging
Sliding Rigister	1404020	7002694	20 mm	455 mm	465 mm	Mobile	10/box
	1404025	7002695	25 mm	480 mm	465 mm	Mobile	10/box
	1404030	7002696	30 mm	480 mm	465 mm	Mobile	10/box
	1404035	7002697	35 mm	480 mm	465 mm	Mobile	10/box

Bloc Connector STERILE EO

Accessories Hysterosalpingography and Chromopertubation

The Bloc Connector is a male Luer-Lock/taper adapter to connect Rigister and Sliding Rigister devices to a vacuum source.



Product Name	Order Reference	Internal Reference	Packaging
Bloc Connector	1507000	7002704	25/box

Class I sterile medical devices. Manufacturer: Laboratoire CCD - CE0459. Read the instructions carefully before use. Use before the expiry date indicated on the wrapping. Do not use if the primary packaging is damaged or open prior to the medical procedure.

Siscone®

STERILE R

Injection of saline solution with anti-leak system for sonohysterography and contrast sonohysterography

- Translucent silicone mobile taper providing seal on cervix (reduces risk of leak without affecting visibility).
- Malleable tip with memory shape to facilitate passage through the cervix and has two centimetric marks.



Malleable tip

- + facilitated passage through the cervix, even in difficult cases



Anti-reflux silicone cone

- + to seal the cervix
 - better distension of the uterus and better vision of anatomical structures
- + painless for the patient

Movable stopper

- + optimal positioning of the cone against the cervix
 - better seal

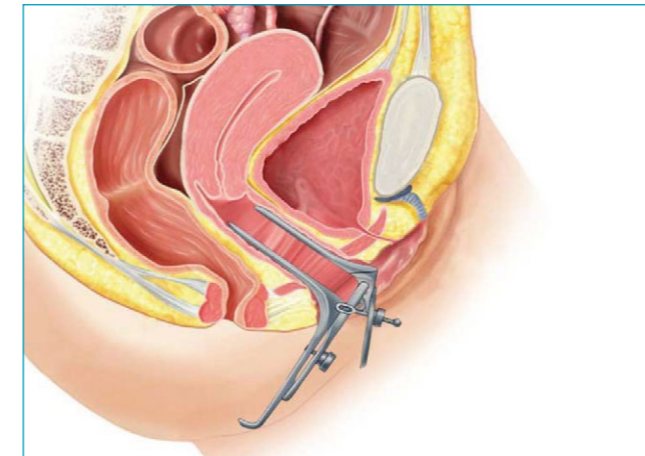
Product Name	Order References	Internal References	Ø Ext.	Ø Int.	Length	Working Length	Opening	Position of insertion markings	Packaging
Siscone	1222001	7002620	2.1 mm	1.1 mm	20.5 cm	18 cm	Distal	5 and 6 cm	10/box

For quality sonohysterography

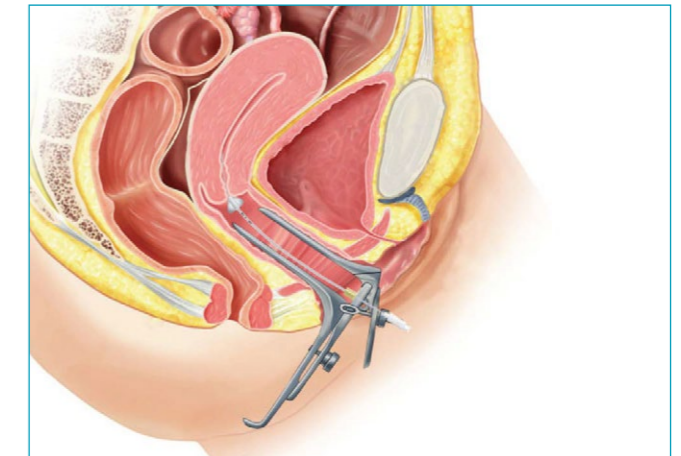
- The cone ensures the seal on the cervix → to highlight anatomical structures.
- The cone remains outside of the uterus → to prevent interference with the ultrasound signal.
- Possibility of performing HyCoSy → HyCoSy (Hysterosalpingo Contrast Sonography) to check the permeability of the fallopian tubes.

Class I sterile medical devices. Manufacturer: Laboratoire CCD - CE0459. Read the instructions carefully before use. Use before the expiry date indicated on the wrapping. Do not use if the primary packaging is damaged or open prior to the medical procedure.

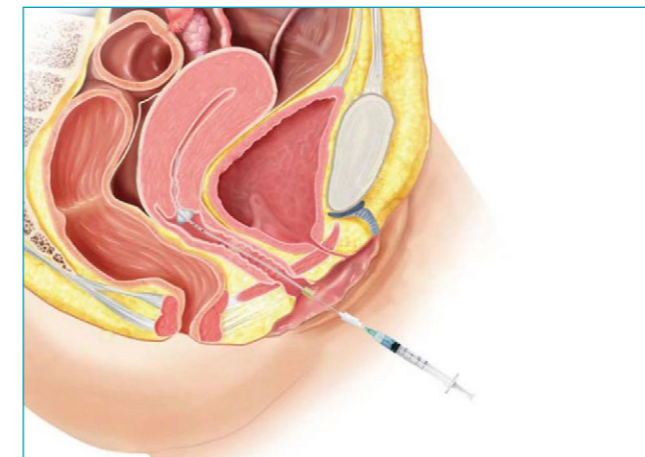
Easy to use



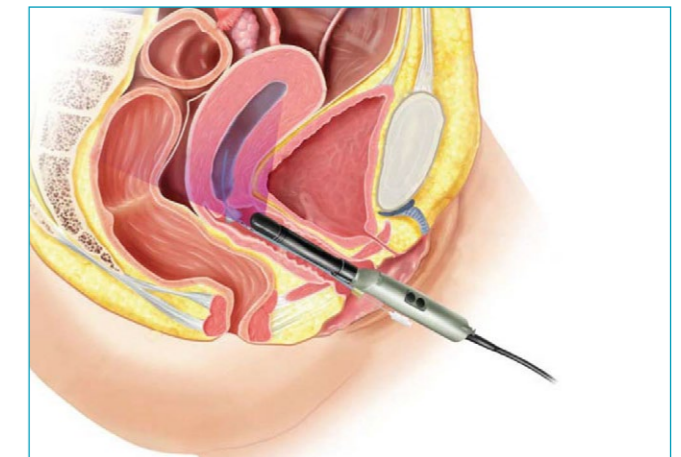
1- After disinfection of the cervix, insert the speculum



2- Insert the Siscone, making sure that the cone is up against the cervix



3- Remove the speculum and connect a syringe of saline solution



4- Insert the ultrasound probe and perform the ultrasound while injecting the liquid

Rudigoz catheter

STERILE R

Injection of saline solution for sonohysterography and contrast sonohysterography

- Catheter for sonohysterography with tapered flexible distal tip along 2 cm to prevent any harm to the mucous membranes of the endometrium.



Product Name	Order References	Internal References	Ø Ext.	Ø Int.	Length*	Opening	Position of insertion markings	Packaging
Rudigoz catheter	1402000	7002690	2.1 mm	1.65 mm	21.5 cm/19 cm	Distal	3 and 4 cm	25/box

*Total length/Working length

Class I sterile medical devices. Manufacturer: Laboratoire CCD - CE0459. Read the instructions carefully before use. Use before the expiry date indicated on the wrapping. Do not use if the primary packaging is damaged or open prior to the medical procedure.

Pipelle® STERILE EO

Endometrial biopsy by aspiration, for effective endometrial cancer screening

- The Pipelle is the gold standard for the screening of endometrial cancers, with more than two hundred publications attesting to its effectiveness, reliability and safety.
- Its aspirating force provides high-quality sampling.



Product Name	Order References	Internal References	Ø Ext.	Ø Int.	Length	Ø Lateral opening	Sampling type	Packaging
Pipelle	1103000	7002588	3.1 mm	2.6 mm	23.5 cm	2.1 mm	Histology	25/box

Pipelle® Mark II STERILE EO

Histological and cytological sampling in one procedure

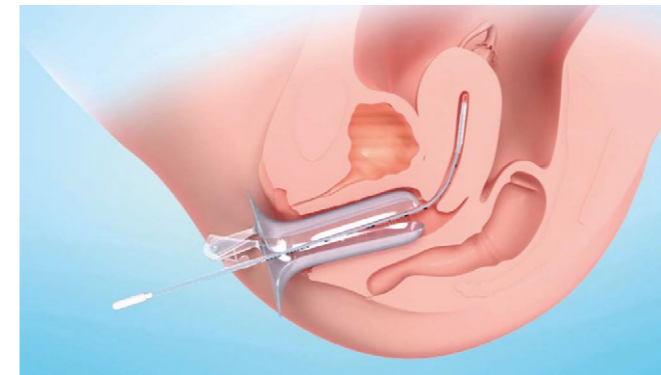
- The Pipelle Mark II, an improved version of the Pipelle, has a rough distal tip providing for the sampling of endometrial surface cells.
- For an even more thorough sample collection, allowing for histology and cytology in just one procedure.



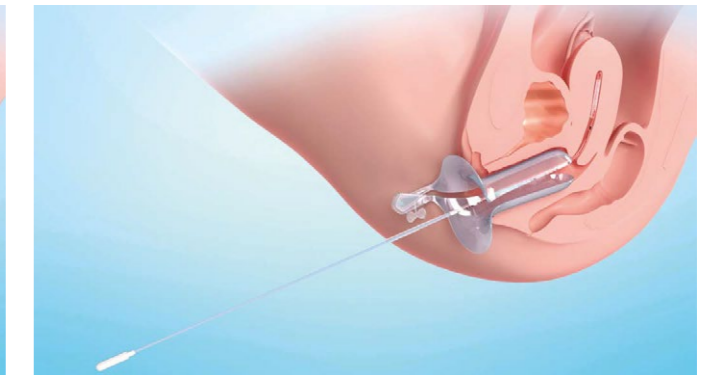
Product Name	Order References	Internal References	Ø Ext.	Ø Int.	Length	Ø Lateral opening	Sampling type	Packaging
Pipelle Mark II	111020100	7002716	3.1 mm	2.6 mm	23.5 cm	2.1 mm	Histology + Cytology	25/box

Class I sterile medical devices. Manufacturer: Laboratoire CCD - CE0459. Read the instructions carefully before use. Use before the expiry date indicated on the wrapping. Do not use if the primary packaging is damaged or open prior to the medical procedure.

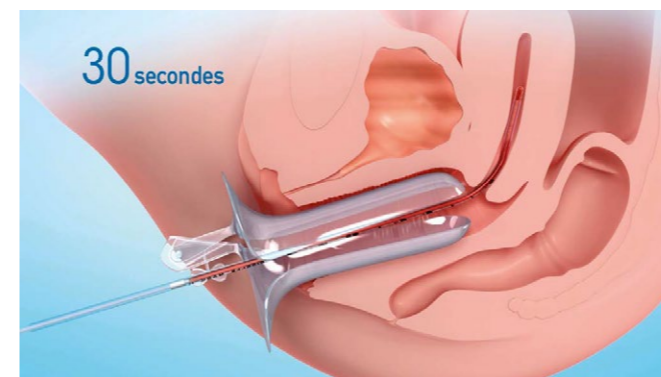
Easy to use



1- Insert the Pipelle® until reaching the uterine fundus



2- In one movement, pull on the plunger to bring it as far as it will go



3- Sweep the uterus for 30 seconds, in back-and-forth movements and rotations



4- Cut the tip of the Pipelle®



5- Push the plunger back in again to empty the content

Pipelle® H STERILE EO

Based on Pipelle, Pipelle H is lengthened to allow being passed through the diagnostic sheath of a hysteroscope, once the optic has been removed

- Owing to its length (50 cm), the Pipelle H produces enough suction to collect a large volume of endometrial tissue, despite the presence of the distension medium, and without having to repeat the procedure several times.
- As the Pipelle H is much longer than the hysteroscope, it is always possible to perform a biopsy, even if the uterine cavity is large.
- Numbered guide-marks to gauge the insertion length.



Product Name	Order References	Internal References	Ø Ext.	Ø Int.	Useful length	Ø Lateral opening	Sampling type	Packaging
Pipelle H	1112301	7002606	3.1 mm	2.6 mm	50 cm	2.1 mm	Histology	10/box

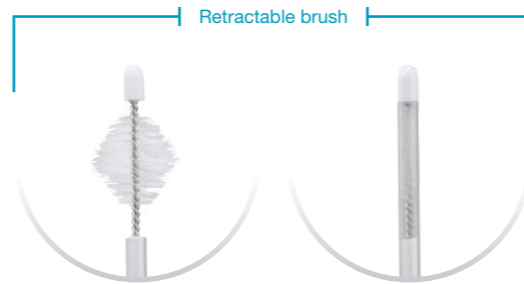
Class I sterile medical device. Manufacturer: Laboratoire CCD - CE0459. Read the instructions carefully before use. Use before the expiry date indicated on the wrapping. Do not use if the primary packaging is damaged or open prior to the medical procedure.

Endobrush® standard STERILE EO

Endometrial cytology samples or bacteriological samples

Diamond-shaped brush for sampling of endometrial surface cells. The brush retracts fully in the sheath and is covered by a rounded end cap.

- Atraumatic during passage into the cervix.
- Protection of the brush and sample against contamination.



Product Name	Order References	Internal References	Diameter	Length	Packaging
Endobrush	1113000	7002608	Diamond-shaped brush Length: 2 cm Min diameter: 4 mm Max diameter: 5 mm	23.5 cm	25/box

Endobrush: Class I sterile medical devices. Manufacturer: Laboratoire CCD - CE0459. Use before the expiry date indicated on the wrapping. Do not use if the primary packaging is damaged or open prior to the medical procedure.

Spirette® and Mucat® STERILE R

- Spirette® and Mucat® sterile are medical devices that are intended for collecting cervical mucus for diagnostic purposes and for direct exocervical or endocervical mucus aspiration to help in the process of an ART procedure.
- Aspiration is performed using the integrated plunger and does not require use of a syringe.
- The Spirette catheter has distance markings and a handle to facilitate gripping of the plunger.



Guide marks at 4, 7, 8 and 10 cm from distal end



Product Name	Order Reference	Internal Reference	Ø Ext.	Ø Int.	Length	Quantity
Spirette	1106000	7002590	3.1 mm	2.6 mm	26.3 cm	25/box
Mucat	110600S	7002721	3.1 mm	2.6 mm	26.4 cm	25/box

Class I sterile medical devices. Spirette and Mucat: Manufacturer: Laboratoire CCD - CE0459. Use before the expiry date indicated on the wrapping. Do not use if the primary packaging is damaged or open prior to the medical procedure.

Flexible hysteroscope

STERILE EO



Measurement of uterine depth

- Flexible hysteroscopes with distance markings from the distal tip along 15 cm.
- Made of polyethylene, they can bend and are equipped with shape memory to facilitate passage into the cervix.



Product Name	Order References	Internal References	Proximal diameter	Total length	Usable length	Packaging
Flexible hysteroscope	1502S10	7002736	CH 10 - 3.33 mm	29.6 cm	15 cm	25/box
	1502S12	7002737	CH 12 - 4 mm	29.6 cm	15 cm	25/box
	1502S14	7002738	CH 14 - 4.67 mm	29.6 cm	15 cm	25/box

Progressive dilator

STERILE EO



Progressive cervical dilation for endo-uterine exams

- The distal part has four or five segments (depending on the model) measuring 1.5 cm each, with increasing diameters from the distal tip.
- Progressive dilation with hysteroscopy, curettage, endouterine aspiration, etc.



Product Name	Order References	Internal References	Segment diameter	Length of the intracervical part	Packaging
Dilator - Small model	1605000	7002710	5 - 6 - 7 - 8 mm	6.5 cm	10/box
Dilator - Large model	1605001	7002711	8 - 9 - 10 - 11 - 12 mm	8.5 cm	10/box

Use before the expiry date indicated on the wrapping. Do not use if the primary packaging is damaged or open prior to the medical procedure.



Obstetrics

Because antenatal screening is already a difficult moment for a patient, Laboratoire CCD offers high quality devices to the gynaecologists to help them realise quality sampling and facilitate the procedure.

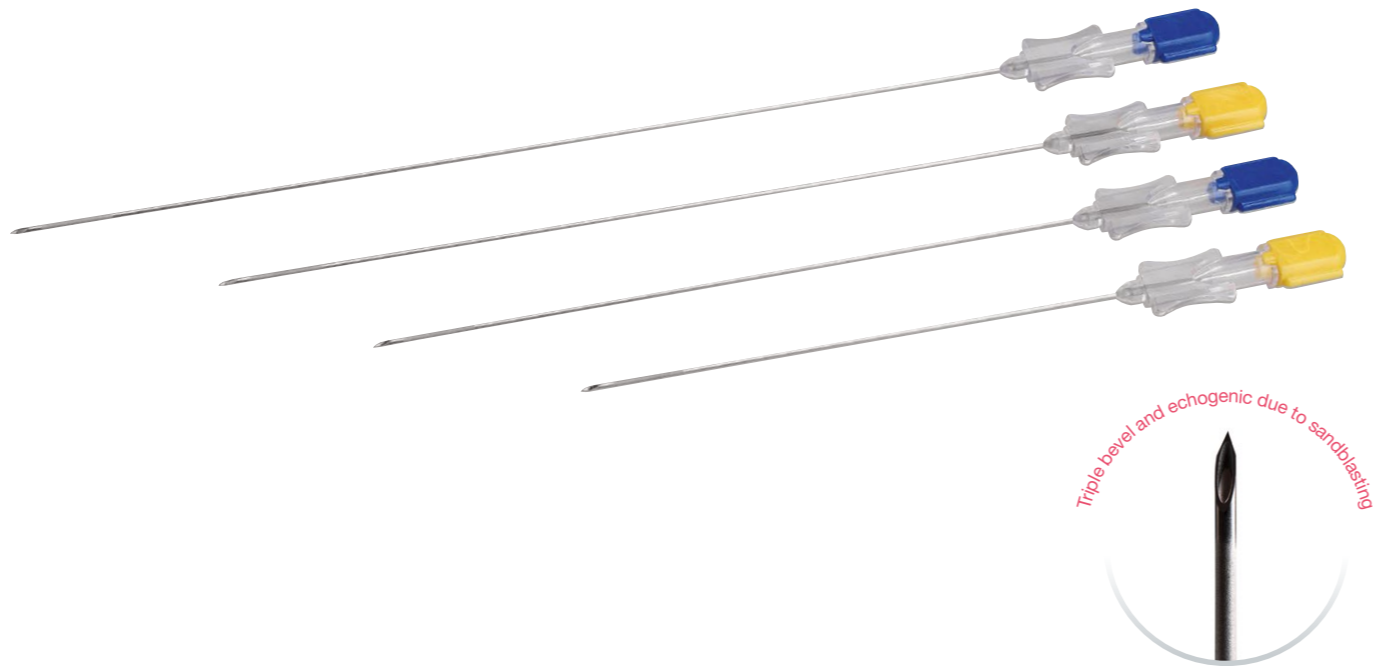
Needles for amniocentesis and cordocentesis STERILE R

Enhanced echogenicity for better control of the procedure

- Needle with sandblasted distal tip on 12 mm for enhanced echogenicity.
- Triple-bevel tip (60°) for easier insertion through tissue.
- Stylet used to increase the rigidity of the needle and prevent coring.

Two indications:

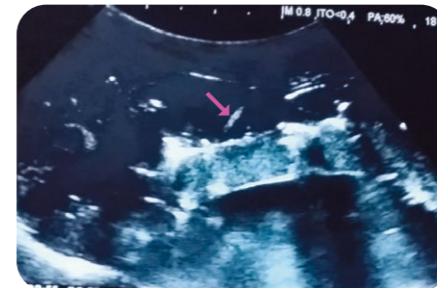
- Transabdominal sampling of amniotic fluid.
- Transabdominal puncture of foetal blood in the umbilical cord.



Product Name	Order References	Internal References	Length	External diameter	Colour of stylet base	Packaging
Needles for amnio/cordocentesis	1140701	7002610	10 cm	0.9 mm 20 G	● yellow	25/box
	1110600	7002599	12 cm		● blue	
	1119615	7002609	15 cm		● yellow	
	7004836	7004836	18 cm		● blue	

Controlled procedure with maximum echogenicity

- Sandblasting of the needle tip → increased echogenicity.
- Easy location of needle path, in particular its tip, within the ultrasound beam.
- Enhanced needle visibility providing greater control, for a more precise and safer procedure.



Easy to handle

- The stylet increases the rigidity of the needle, for better control of its position and insertion.
- Changes in needle orientation are controlled.

Complete range

- Four lengths available to meet the needs of any morphological profile and BMI.

A length adapted to the patient ensures safe needle insertion in the desired area.



- Long bevel (60°)**
+ effective perforation of tissue
- Sandblasted tip**
+ optimal echogenicity

STERILE R
Radiation sterilization
+ absence of residual cytotoxic components for the foetus

Easy-to-adjust wide stylet

- + increases the rigidity of the needle,
- + no coring of tissue with passage of the needle

- Ergonomic base**
+ easy gripping

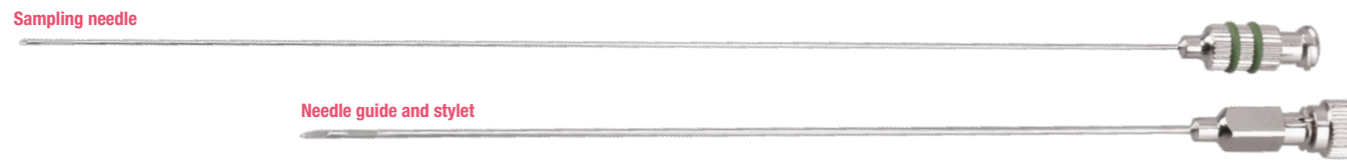
Class IIa medical devices. Manufacturer: Laboratoire CCD - CE0459. Read the instructions carefully before use. Use before the expiry date indicated on the wrapping. Do not use if the primary packaging is damaged or open prior to the medical procedure.

CVS set STERILE R

Safe sampling and procedure for chorionic villus sampling

- Two echogenic coaxial needles to ensure optimal transabdominal chorionic villus sampling under ultrasound monitoring.
- Guide needle equipped with a removable stylet to penetrate the abdomen without risk of coring tissue.
- Thin sampling needle inserting in the guide needle in the place of the stylet to perform the biopsy.
- The guide needle and sampling needle have echogenic marking by sandblasting at 2 mm before the bevel tip, and measure 5 mm to ensure optimal visibility of needles during ultrasound monitoring.
- The guide needle allows for resampling in situ without having to insert another needle into the patient.

Enhanced safety



Product Name	Order Reference	Internal Reference	Needle guide			Sampling needle			Packaging
			Length	Ø Int.	Ø Ext.	Length	Ø Int.	Ø Ext.	
CVS set	1141201	7002611	15.1 cm	1 mm	1.25 mm 18 G	20 cm	0.6 mm	0.8 mm 21 G	10/box

Blache needles STERILE R

Single needle with trocar

- Blache needle for ultrasound-guided transabdominal sampling with a short bevel and a lateral window near its tip.
- Triangular-tip trocar** for tissue perforation.



Product Name	Order References	Internal References	Working length	Ø Int.	Ø Ext.	Packaging
High model	1110800	7002601	11 cm	1.04 mm	1.3 mm 18 G	10/box
Small model	1110700	7002600	14.4 cm	1.06 mm	0.76 mm 18 G	10/box

Class IIa medical devices. Manufacturer: Laboratoire CCD - CE0459. Read the instructions carefully before use. Use before the expiry date indicated on the wrapping. Do not use if the primary packaging is damaged or open prior to the medical procedure.

ABC system STERILE EO

Continuous aspiration set

- Aspiration system with continuous suction, comprising a syringe with stop at 20 ml and an extension equipped with a clamp.
- In combination with amniocentesis, cordocentesis and blache needles or chorionic villus sampling sets.
- Tube with clamp for disconnection of the syringe without disturbing the position of the sampling needle.



Product Name	Order Reference	Internal Reference	Tube		Syringe		Packaging
			Length	Connections	Volume	Connection	
ABC system	1604000	7002709	10 cm	Female Luer Lock + rotating male Luer Lock	20 ml	Male Luer Lock	10/box

Index

Product Name	Order References	Internal References	Page
ASSISTED REPRODUCTIVE TECHNOLOGY			
Ovo Classic needle 30 CM G17	1403001	7002691	10
Ovo needle ART of CCD	1313701	7002645	10
OPS ART of CCD without tap 30 cm	1313101	7002639	11
OPS ART of CCD with tap 30 cm	1313201	7002640	11
OPS Classic with tap 30 cm	1301001	7005722	12
OPS Classic without tap 30 cm	7005723	7005723	12
OPS Classic with tap 35 cm	7005413	7005413	12
OPS Classic without tap 35 cm	7005414	7005414	12
OPS vial	1313000	7002761	13
Inventcath Eco	1320121	7002647	14
Frydman Classic 4.5	1306045	7002630	14
Frydman Classic 5.5	1306055	7002631	14
Frydman Memory	130MF45	7002735	15
Mock catheter	1322901	7002653	15
Echogyn Embryoview M 18 cm	1325901	7002675	16
Echogyn Embryoview M 23 cm	1325701	7002673	16
Echogyn Embryoview M Mock 18 cm	1326001	7002676	16
Echogyn Embryoview M Mock 23 cm	1325801	7002674	16
Frydman Ultrasoft	1324201	7002665	17
Stylet for Frydman Soft Ultrasoft	1320701	7002648	17
Frydman Ultrasoft Echo	1324301	7002666	17
Stylet for Frydman Soft Ultrasoft	1320701	7002648	17
Ultrasoft Frydman Set Echo	1323501	7002658	18
Ultrasoft Frydman Set Mock Echo	1323801	7002661	18
Classic Ultrasoft 18 cm	1321301	7002650	19
Classic Ultrasoft 23 cm	1324501	7002667	19
Classic Ultrasoft Mock 18 cm	1323001	7002654	19
Classic Ultrasoft Mock 23 cm	1324601	7002668	19
Pearl tip Classic	1323951	7002663	20
Pearl Tip Soft	1323961	7002664	20
Short Frydman Set	1307000US	7002733	21
Frydman Soft with stylet	1307000	7002632	21
Ultrasoft Frydman® Set with Guide	131230301	7002719	22
Ultrasoft Frydman® Set Echo with Guide	1322801	7002652	22
TDT set	1308000	7002634	23
Full Echo 23	1326501	7002681	24
Full Echo Pro	1326801	7002683	25
Standard IUI	120400S	7002726	27
Genitor IUI	120400M	7002725	27
Malleable memory IUI catheter with shape memory	12040MF	7002728	27
Standard IUI catheter with guide	12040AM	7002727	27
Transport model IUI	120240301	7002717	27
IUI and embryo transfer syringe 1 ml	1323101	7002655	28

Product Name	Order References	Internal References	Page
FUNCTIONAL EXPLORATION OF THE FEMALE REPRODUCTIVE SYSTEM			
Rigister 20 mm	1401020	7002686	32
Rigister 25 mm	1401025	7002687	32
Rigister 30 mm	1401030	7002688	32
Rigister 35 mm	1401035	7002689	32
Sliding Rigister 20 mm	1404020	7002694	33
Sliding Rigister 25 mm	1404025	7002695	33
Sliding Rigister 30 mm	1404030	7002696	33
Sliding Rigister 35 mm	1404035	7002697	33
Bloc Connector	1507000	7002704	33
Siscone	1222001	7002620	34
Rudigoz catheter	1402000	7002690	35
Pipelle	1103000	7002588	36
Pipelle Mark II	111020100	7002716	36
Pipelle H	1112301	7002606	37
Endobrush	1113000	7002608	38
Spirette	1106000	7002590	39
Mucat	110600S	7002721	39
Flexible hysterometer CH10	1502S10	7002736	40
Flexible hysterometer CH12	1502S12	7002737	40
Flexible hysterometer CH14	1502S14	7002738	40
Dilator - Small model	1605000	7002710	41
Dilator - Large model	1605001	7002711	41

OBSTETRICS			
Needles for amnio/cordocentesis 10 cm	1140701	7002610	44
Needles for amnio/cordocentesis 12 cm	1110600	7002599	44
Needles for amnio/cordocentesis 15 cm	1119615	7002609	44
Needles for amnio/cordocentesis 18 cm	7004836	7004836	44
CVS set	1141201	7002611	46
High model blache needle	1110800	7002601	46
Small model blache needle	1110700	7002600	46
ABC system	1604000	7002709	47



50

For 50 years, Laboratoire CCD has listened to women. CCD has a central position in the fields of Assisted Reproductive Technology, Gynecology and Obstetrics, and developing a wide range of french-made medical devices, pharmaceuticals dietary supplements for the health of each and every woman. Our daily mission, to provide care to women through each phase of their lives.



36, rue Brunel
75017 Paris
www.laboratoire-ccd.com
export@ccdlab.com

International customer service

Tel: +33 (0)1 44 95 17 00 - Fax : +33 (0)1 44 95 14 90
Email: customer-service@ccdlab.com

All rights reserved to Laboratoire CCD

VR6435 Rev.02-06/2024 - 3000400

This document is intended solely for the use of healthcare professionals.